


The logo for the Education Development Center (EDC), consisting of the letters "EDC" in white on a dark blue square background.

Education  
Development  
Center

# IMPLEMENTING CULTURALLY RESPONSIVE AND SOCIAL JUSTICE EVALUATIONS

## An AGEP ECBC Webinar

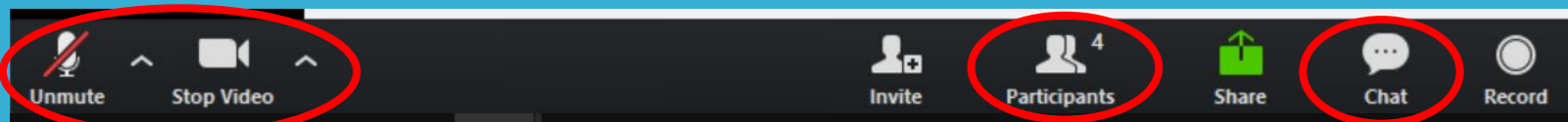
April 28, 2021



This webinar  
is being  
recorded

### Suggested Webinar Etiquette

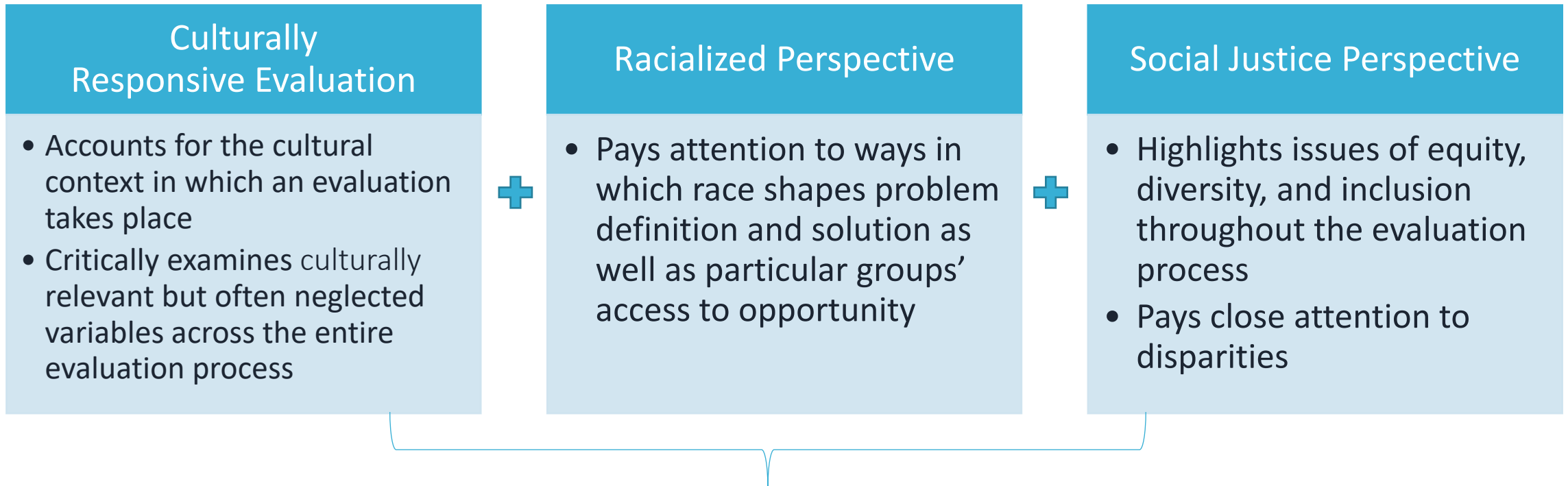
1. Make sure your screen name has your name and alliance
2. Mute yourself unless you are talking
3. Turn on video when talking
4. Use the chat to share thoughts, comments, questions at any time
5. Use side by side mode for easy viewing



# Welcome and Agenda

- Introductions
- Review of key CRE considerations
- Break-out session
- Large group debrief
- Wrap up

# Recap of Key Considerations: *Definitions*



Taken together, CRE/SJP inspires evaluators to be more self-reflective practitioners, challenges practices that marginalize groups and normalize injustices, and challenges some prevailing assumptions.

# 3 Key Issues for AGEP Evaluators

## 1. Rigor

- What is/is not consider rigorous often decided by those who have power and influence.
- In evaluation, rigor generally focuses on methodological rigor.
- Instead, rigor needs move beyond methods to consider what works for different groups of people.

# 3 Key Issues for AGEP Evaluators

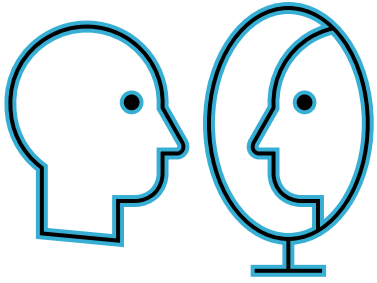
## 2. Definitions of Success

- Shifting cultures in AGEP to include broader definitions of success.
- More attention to systems and systems change.
- Success definitions not standard but flow from context.
- Strive for include multiple perspectives of success.

# 3 Key Issues for AGEP Evaluators

## 3. Deficit-based vs. Strengths-based Orientation

- In a deficit model, the goals are to “fix” participants: to make them better fit in and act like a "traditional scientist."
- A strengths-based perspective focuses on uncovering assets and strengths of participants, the Alliance and its partners.



# Reflection Question

**As an evaluator for your AGEP Alliances think about:**

## Identifying Potential “Blind Spots”

- What am I missing?
- Whose perspective isn't represented?
- What other explanations could there be for what the data tells me?
- Did I miss something, did I miss somebody, are there other important questions that I missed, etc.

# Break-out Session Guidelines

- Total time for break out sessions: **30 minutes**
- **Two sets of questions (15 minutes each)**
- **Select a person** to share key highlights/questions at the large group discussion
- AGEP ECBC team will help with note taking and facilitation
- Breakout conversations ***are not recorded***
- Please use this time to share and learn from each other!



# Break-out Session

## Part 1: Reflections on Applying CRE in an AGEP evaluation

- ***Introductions***

- Your name, AGEP Alliance, Role, and a quick overview of the focus of your Alliance

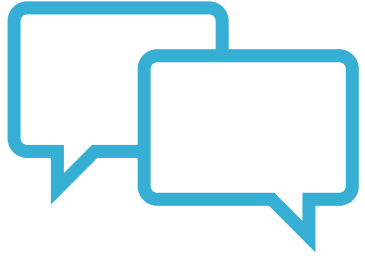
- ***Guiding questions:***

- Since the webinar, have you had an opportunity to think more about ways to engage in discussions or incorporate culturally responsive practices in your work? How so?
- What are some challenges that you are facing in your work that make it harder to use a culturally responsive approach?
- How are you incorporating CRE perspectives into your evaluation? How does your Alliance consider or address CRE/SJP in the overall model?

# Break-out Session

## Part 2: Assessing collaborations

- ***Guiding questions:***
  - What are the definitions of success for the AGEP Alliance that you are evaluating (or directing, if you are a PI)? Who decides what the definition of success is?
  - Is there co-construction vs. input among partners? Who is at the table and who is missing during key meetings?
  - Whose reality is valued? Which voices are excluded but need to be included?
  - Has your evaluation uncovered any disparities in participation in collaboration or in the model? How have you brought attention to those?



## Large Group Discussion

- What were some common themes that you discussed in your group?
- Any surprises? Aha moments?
- What is something you discussed today that you would like to take back to your team or PI?

# Relevant Resources

## [Equitable Evaluation Framework Applies to all Evaluation](#)

This article is from the Center for Evaluation Innovation, coordinators of the Evaluation Roundtable – a network of evaluation and learning leaders from over 130 foundations in the U.S. and Canada. They also worked on research that led to the creation of the Equitable Evaluation Initiative (EEI) whose mission is to build a sustainable field of leaders who are reimagining the purpose and practice of evaluation to advance equity and expand notions of validity, rigor and complexity.

**Practical Consideration:** This piece discusses a framework for thinking about evaluation work differently and calls on evaluators to consider specific aspects of their work. Examples of how to use the framework in practice are included.

## [Racial Equity Impact Assessment Toolkit](#)

This resource is from Race Forward: The Center for Racial Justice Innovation, formerly known as the Applied Research Center (ARC). The toolkit provides a brief introduction and rationalization for Racial Equity Impact Assessments (REIAs) and provides examples of where REIAs have been implemented.

**Practical Consideration:** The toolkit includes a 1-page reference guide of questions to use in varying situations that could arise while putting REIAs into practice.

Links available on the AGEP ECBC website: <https://agep-ecbc.edc.org/resources>

# More Relevant Resources

## [Using a Principles-Focused Evaluation Approach to Evaluate Coalitions and Collaboratives Working Toward Equity and Social Justice](#)

This chapter from *New Directions for Evaluation* describes the relevance and importance of principles for collaborative evaluation work addressing inequities and social injustice. It includes a brief introduction to Principles-Focused Evaluation and describes Principles for Collaborating for Equity and Justice that provide a rationale for using this approach when evaluating collaboratives addressing inequities.

**Practical Consideration:** This resource includes tables with questions mapped to constructs that are frequently used in evaluations of collaborations. These tables offer evaluators ways to think about in how they might take CRE into account in certain situations. Also check out

## [How Do You Evaluate Systems Change? A Place to Start](#)

This article from FSG provides an overview of many approaches to evaluating a systems change effort. It features mapping as an effective way to understand particular systems and makes the distinction between evaluating a program and systems change work.

**Practical Consideration:** This article link to a number of resources including how to guides for [system mapping](#), [actor maps](#), and [timeline maps](#), all which can help evaluators understand the context of the effort they are evaluating.

Also check out [Evaluation in Today's World: Respecting Diversity, Improving Quality, and Promoting Usability](#),  
by Thomas & Campbell

# Wrap-up: Survey Responses



22 responses  
from 12  
Alliances

## Top Rated Webinar Topics:

1. Evaluation reporting expectations
2. Alliance presentations of their evaluations
3. Conversations about evaluation successes and challenges
4. Preparing for NSF site visits

## Preferred Webinar Format:

- Mix of presentation and discussion: 43%
- Presentation only with Q&A: 33%
- Conversations on a topic: 24%

78% like the proportion of evaluator-only webinars



# Wrap-up: Upcoming Webinars

Based on your feedback, we are planning:

- Webinar(s) where Alliances share their evaluation work
- Webinar on preparing for NSF site visits

**Dates and times coming soon!**



---

# THANK YOU

Contact the AGEP ECBC team any time!

[AGEP\\_ECBC@edc.org](mailto:AGEP_ECBC@edc.org)